

MONTHLY MEMBERSHIP PROGRESS REPORT

District 317 D

Results as of: 6/30/2024

GMT:

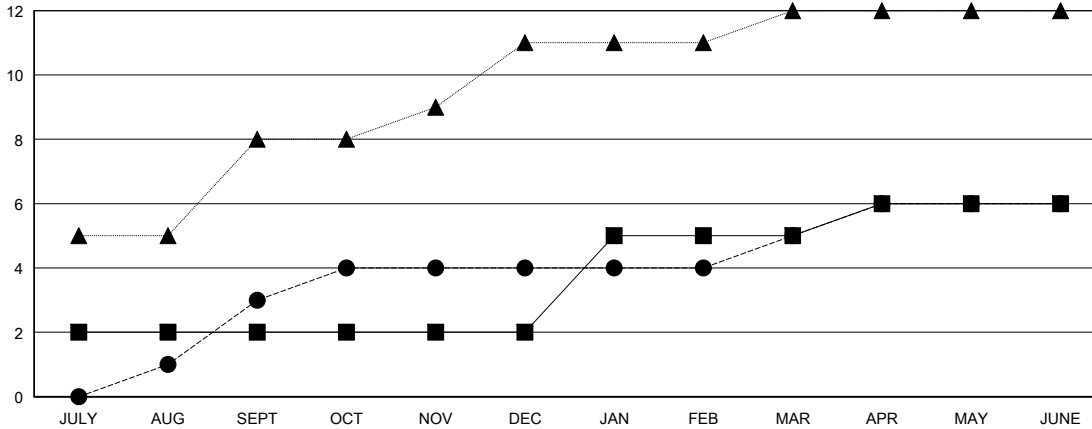
LOCATION INDIA

GMT CA

| Clubs | | | |
|-----------------------|---------------|-----------|---------------|
| RESULTS FOR 2023-2024 | | | |
| QUARTER | NEW CLUB GOAL | NEW CLUBS | DROPPED CLUBS |
| JULY/AUG/SEPT | 2 | 3 | 2 |
| OCT/NOV/DEC | 0 | 1 | 4 |
| JAN/FEB/MAR | 3 | 1 | 0 |
| APR/MAY/JUNE | 1 | 1 | 1 |

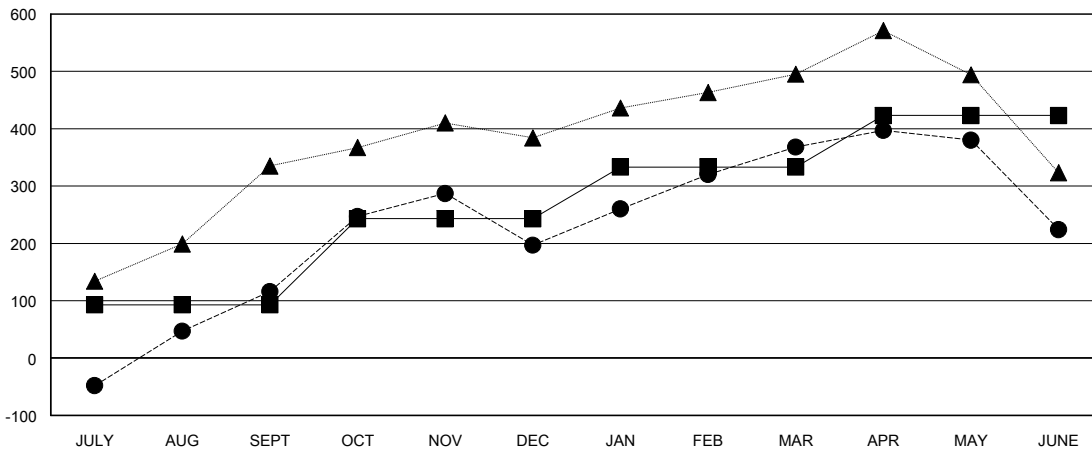
| Members | | | |
|-----------------------|------------------------|----------------------|--|
| RESULTS FOR 2023-2024 | | | |
| QUARTER | MEMBER GROWTH NET GOAL | MEMBER GROWTH ACTUAL | DROPPED MEMBERS ACTUAL (including transfers) |
| JULY/AUG/SEPT | 93 | 266 | 136 |
| OCT/NOV/DEC | 150 | 304 | 209 |
| JAN/FEB/MAR | 90 | 186 | 9 |
| APR/MAY/JUNE | 90 | 104 | 241 |

GOALS AND ACTUAL NEW CLUBS CUMULATIVE



- - CURRENT YEAR GOALS FOR NEW CLUBS
- - CURRENT YEAR ACTUAL NEW CLUBS
- ▲ - LAST YEAR ACTUAL NEW CLUBS

GOALS AND ACTUAL MEMBERS CUMULATIVE



- - MEMBER GROWTH NET GOAL
- - MEMBER GROWTH ACTUAL
- ▲ - LAST YEAR MEMBERSHIP ACTUAL

| | | |
|------------------------|---|-------------------------------------|
| DROPPED CLUBS: 7 | 97 CLUBS OF 125 ADDED 1 OR MORE NEW MEMBERS | GENDER DISTRIBUTION |
| | | MALE 3,406 (74.50%) |
| | | FEMALE 1,166 (25.50%) |
| DROPPED MEMBERS | CLICK HERE FOR CUMULATIVE MEMBERSHIP DATA | TOTAL FAMILY UNIT MEMBERS 1,746 |
| DECEASED 13 | | FAMILY MEMBERS PAYING HALF DUES 901 |
| CLUB CANCELLED 72 | | |
| OTHER 509 | | |
| TOTAL 594 | | |